

BAHAMAS

De La Rue Key and Duty Plate Issues

1884-90

Surface printed by De La Rue

wmk. Crown CA

Perf. 14

A new design was introduced in 1884, loosely based on that produced for the 1/- value but with a blank value tablet. A 60-set plate key plate, Plate 1, was employed for the duration of the issue.

The duty plates continued to be used for the succeeding Edwardian and Georgian issues.



Specimen overprints for UPU distribution were only issued for the 2 1/2d (1888) and 6d (1890) values.



carmine-rose



pale rose



bright carmine (aniline)



blue



ultramarine

De La Rue Key and Duty Plate Issues

1884-90



Deep yellow



pale mauve



mauve

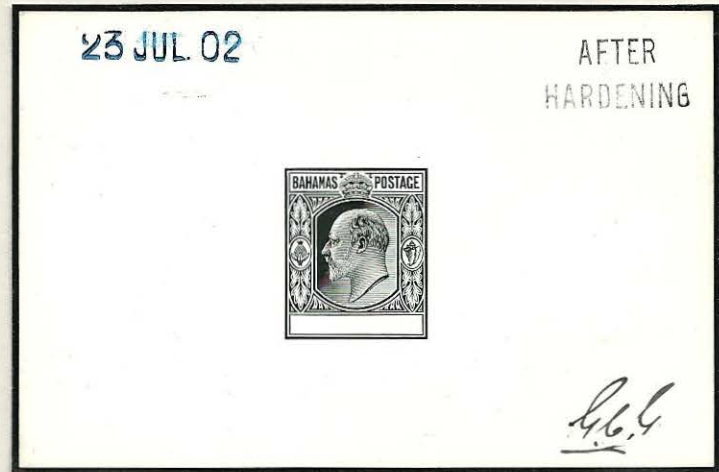


De La Rue Key and Duty Plate Issues

In 1902 a new key plate design, incorporating the new monarch's portrait and the pineapple and conch shell emblems, was introduced. The duty plates employed for the previous QV issue were retained and a new 1/- value added for the Edwardian series.



Bromide proof ex De La Rue Files. The conch shell design at right was subsequently changed.



'AFTER HARDENING' proof approved and dated on 23 July 1902

December 1902 - Specimen Issue

Additionally overprinted ULTRAMAR by the Portuguese receiving authorities for distribution to their colonies. Only 35 sets can exist.



De La Rue Key and Duty Plate Issues

1902-1910

Wmk. Crown CA

Perf.14

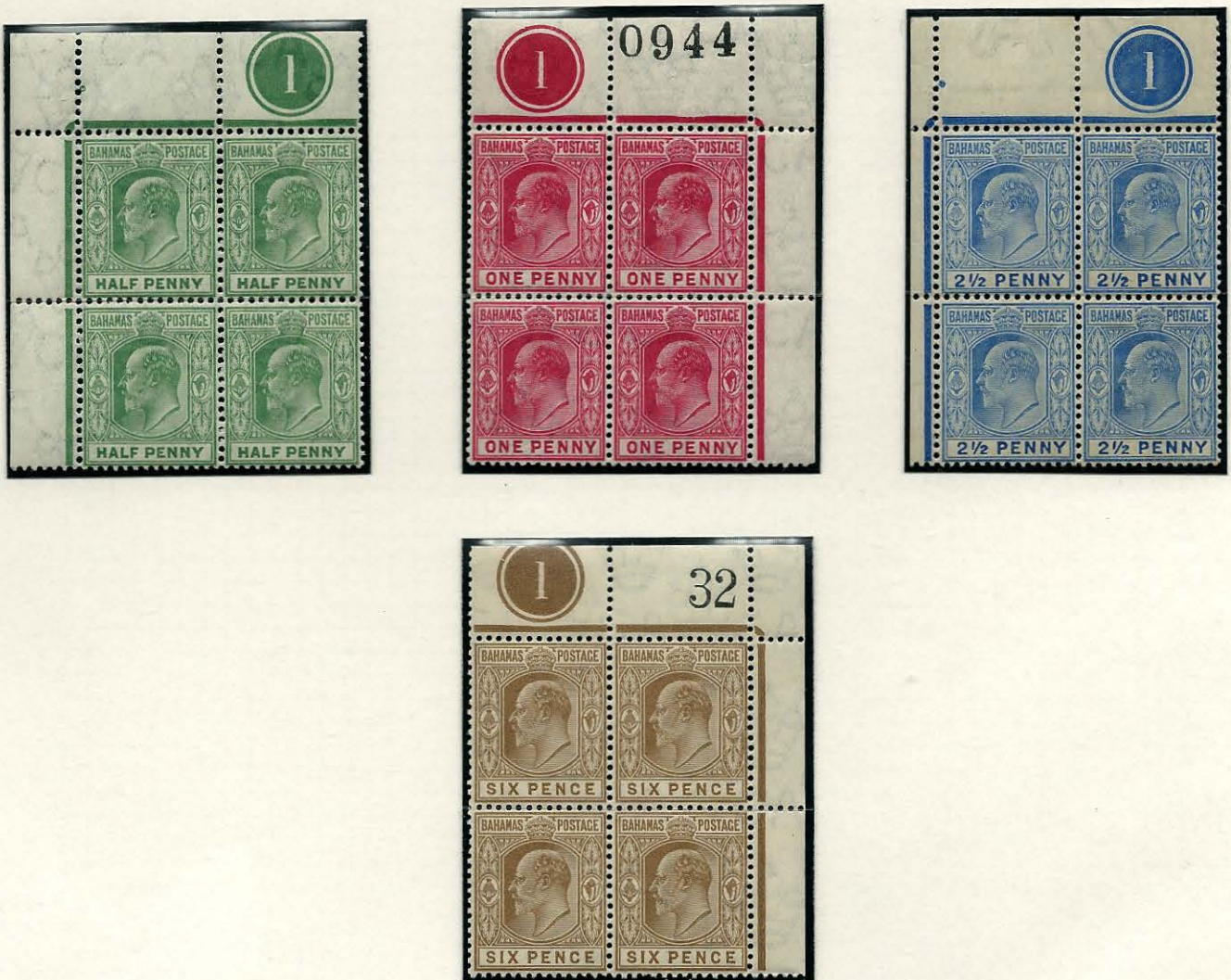


1906-1911

Wmk. Multiple Crown CA

Perf.14

A new value, the 1/2d, was added to the series in 1906. The values shown below were the only values issued on MCCA wmk paper.



De La Rue Key and Duty Plate Issues

May to July 1912

A 60-set key plate (Plate 1) was made in 1912 for the KGV issue, existing duty plates continued in use. All were issued in May except the 1d (due to printing problems), hence the 1d is from a different position.

Lower left corner marginal copies (#49) have constant flaws consisting of damage to the 'M' and 'N' of 'SPECIMEN'.



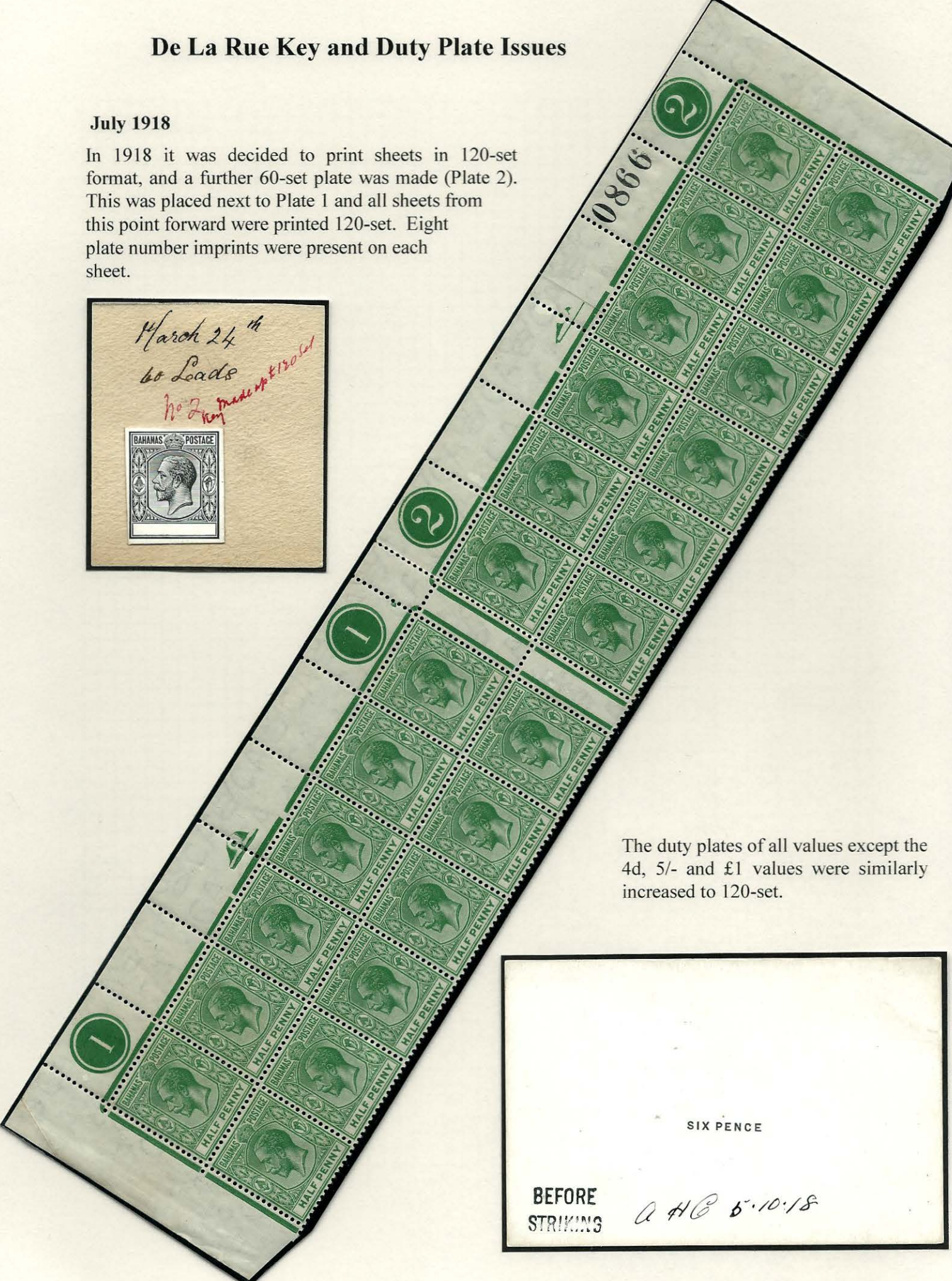
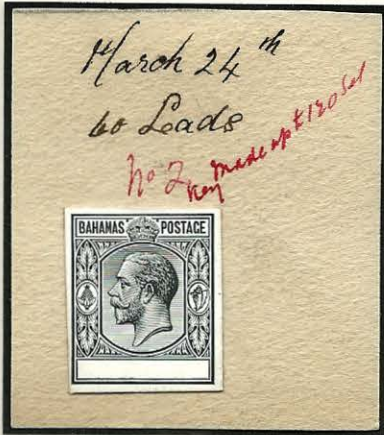
Broken 'M' of 'SPECIMEN' (#41) - constant flaw.



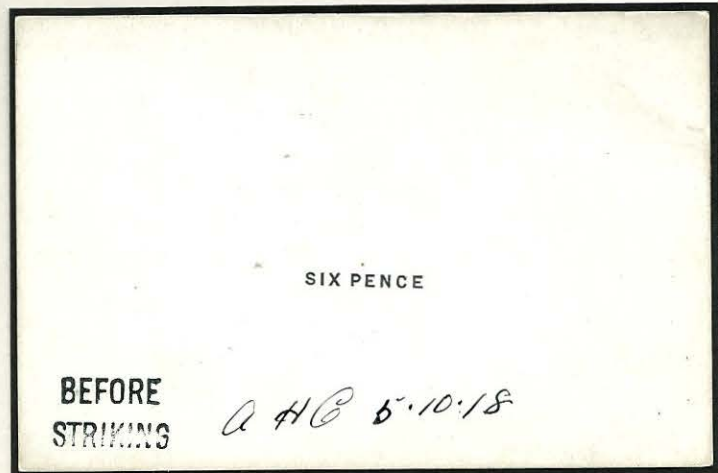
De La Rue Key and Duty Plate Issues

July 1918

In 1918 it was decided to print sheets in 120-set format, and a further 60-set plate was made (Plate 2). This was placed next to Plate 1 and all sheets from this point forward were printed 120-set. Eight plate number imprints were present on each sheet.



The duty plates of all values except the 4d, 5/- and £1 values were similarly increased to 120-set.



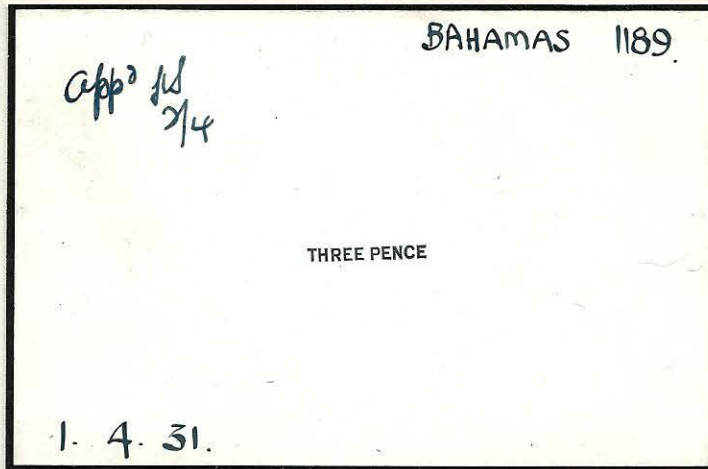
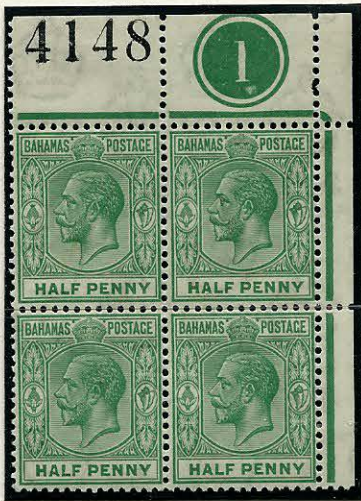
De La Rue Key and Duty Plate Issues

1921-34

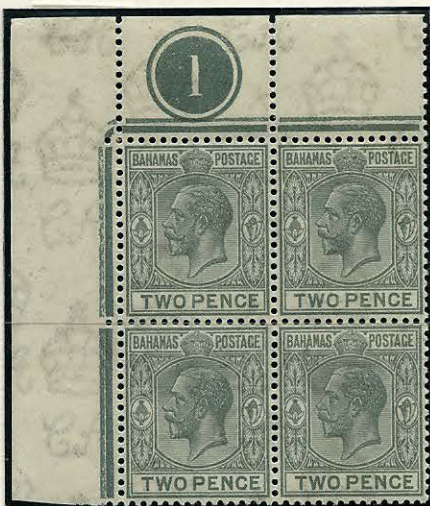
Wmk. Mult. Script CA

Perf 14

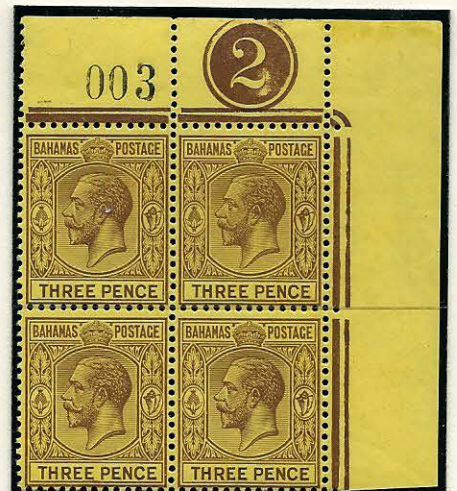
Two new values, the 1½d (1934) and 3d (1931) were added. After 1929 120-set sheets were cut into 60-set panes. Each pane was numbered, and hence Plate 1 blocks with a sheet number originate after 1929.



1 April 1931 – design for 3d duty approved



1931 - on pale yellow



1937 - on bright yellow

De La Rue Key and Duty Plate Issues - KGV

1921-34

Wmk. Mult. Script CA

Perf 14



De La Rue Key and Duty Plate Issues

Duty Plate Flaws

Because the duty plates remained in use with the periodic change of monarch the same constant flaws appear on the Victorian, Edwardian and Georgian issues.

'Sloping 2' variety, row 10 stamp 6 of the 60-set pane.

2 1/2



1902
Wmk. Crown CA



1907 - Wmk. Mult. Crown CA

In 1918 the 60-set 2 1/2d duty plate was replaced by a new 120-set plate, and thus the flaw no longer appears.



May 1912 - Wmk. Mult. Crown CA

496 sheets printed - the only printing with the flaw.



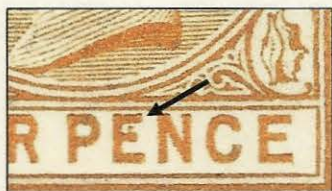
The flaw is not present on the KGV issue on Mult. Script CA paper

De La Rue Key and Duty Plate Issues

Duty Plate Flaws

4d - dot in 1st 'E' of 'PENCE' variety, row 8 stamp 5 (#47) of the 60-set pane.

When the key plate was increased to 120-set in 1918 the 4d duty plate remained 60-set and was used twice to overprint the 120-set key plate sheet. After 1918 the variety occurs in the same position on both panes.



1902-10
wmk. Crown CA



Yellow
1912-19
wmk. Mult. Crown



Orange-yellow



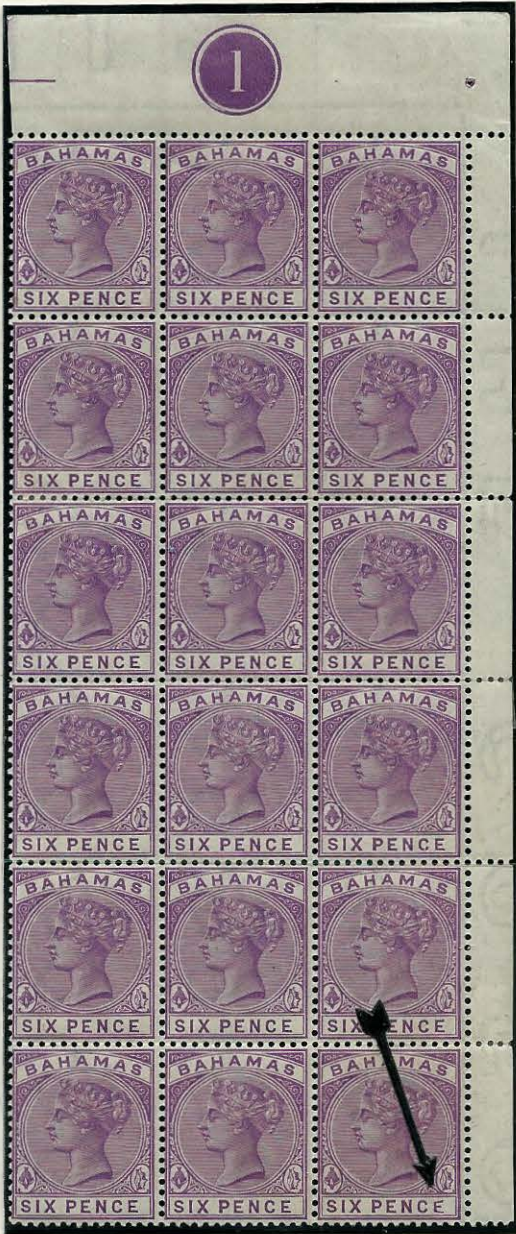
1921-37
wmk. Mult. Script CA

De La Rue Key and Duty Plate Issues

Duty Plate Flaws

6d - Malformed 'E' of 'PENCE' variety, row 6 stamp 6 (#36) of the 60-set pane.

When the key plate was increased to 120-set in 1918 the 6d duty plate was increased by the addition of a new 60-set pane to the original. After 1918 the variety is on the right pane only.



1902-10
Crown CA



Mult. Crown CA



1906-11
Mult. Crown CA



Mult. Script CA



De La Rue Key and Duty Plate Issues

Duty Plate Flaws

Short RH leg of 'N' variety, row 10 stamp 2 (#56)



Mult. Crown CA



Mult. Crown CA

Swan's Head 'S' variety, position unknown



Crown CA



Mult. Crown CA



Mult. Crown CA



Mult. Script CA