

## KING EDWARD VII—THE GLOVER FLAW.

The 'Glover Flaw' is a downward bulge on the name tablet frame, below the first 'A' of 'CAYMAN'. It occurs on all values printed from the King Edward VII 'POSTAGE—POSTAGE' key plate for the Cayman Islands. It also occurs on all values printed from this key plate, for the Gambia and Seychelles, although not for the two stamps printed for St. Helena, as the flaw did not develop until after the ½d and 1d St. Helena values were printed on 9th January 1902. It appears on the last stamp, No. 6, in the first row of the left hand pane.



Enlarged Detail: 500%.



This block also has the 'slotted frame' (L1/4).

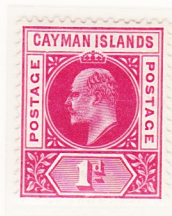


Positional pieces, showing the position of the flaw (L1/6).

The 1902—03 Series.



309 Possible.



256 Possible.



69 Possible.



46 Possible.



37 Possible.



309 Possible.



256 Possible.



66 Possible.

Variety of 'Glover Flaw' on the 1d carmine.



Enlarged Detail: 500%.



The left hand stamp,, above, shows the normal dent in the country name  
 some lines whilst the right hand stamp shows the abnormal dent

The 1904—07 Series.



258 Possible.



164 Possible.



244 Possible.



74 Possible.



74 Possible.



244 Possible.



74 Possible.

The 1907 Series.



48 Possible.



42 Possible.



40 Possible.



19 Possible.



19 Possible.

The Cayman Island Surcharge Provisional issues provide some of the scarcest varieties from the British Commonwealth.



40 Possible.



40 Possible.

E



E

18 Possible.

15 Possible.

BPA Certificate 60803

BPA Certificate 40569

The example, below, has a forged overprint, and is the only recorded example.



E

BPSL Certificate 100426

# KING EDWARD VII—THE SLOTTED FRAME.

The 'Slotted Frame' is a white vertical line appearing through the name tablet and outer frame line at the upper right. It occurs on all values printed from the King Edward VII 'POSTAGE—POSTAGE' key plate for the Cayman Islands, the Gambia, the Seychelles and St. Helena. It appears on the fourth stamp, No. 4, in the first row of the left hand pane, L1/4.

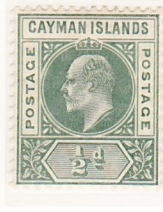


Enlarged Detail: 500%.

## The 1902—03 Series.



309 Possible.



258 Possible.



244 Possible.



74 Possible.



## The 1907 Series.



48 Possible.

## The 1D on 5/- Surcharge Provisional.

## The ½D on 5/- Surcharge Provisional.

E



18 Possible.

DPSL Certificate 104020

E



15 Possible.

DPSL Certificate 105200

This piece is ex-Archive: The Royal Philatelic Society London certificate states that it is from the 'Madagascar Archive' but missed the 'hand-stamp'.

The 1907 1/- violet & green, and the 5/- salmon & green values, overprinted 'SPECIMEN', both show the 'Slotted Frame' variety.



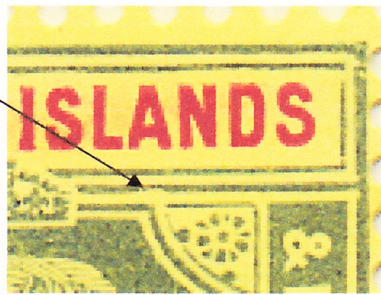
E

RPSL Certificate 216312

# KING EDWARD VII—THE 'SPAVEN FLAW'.

The 'Spaven Flaw' is an upward indentation in the head plate frame coinciding with a break in the upper left corner of the upper right decorative panel. It occurs on all values printed from the King Edward VII 'POSTAGE & REVENUE' Plate 1 Key Plate.

It appears on the third stamp, No. 3, in the first row of the left hand pane, L1/3



Enlarged Detail: 500%.



Positional block showing the flaw at L1/3



E



Only 6 or 7 examples Possible.

1908 1d on 4d Revenue.  
Only 3 examples possible.  
RPSL 202784

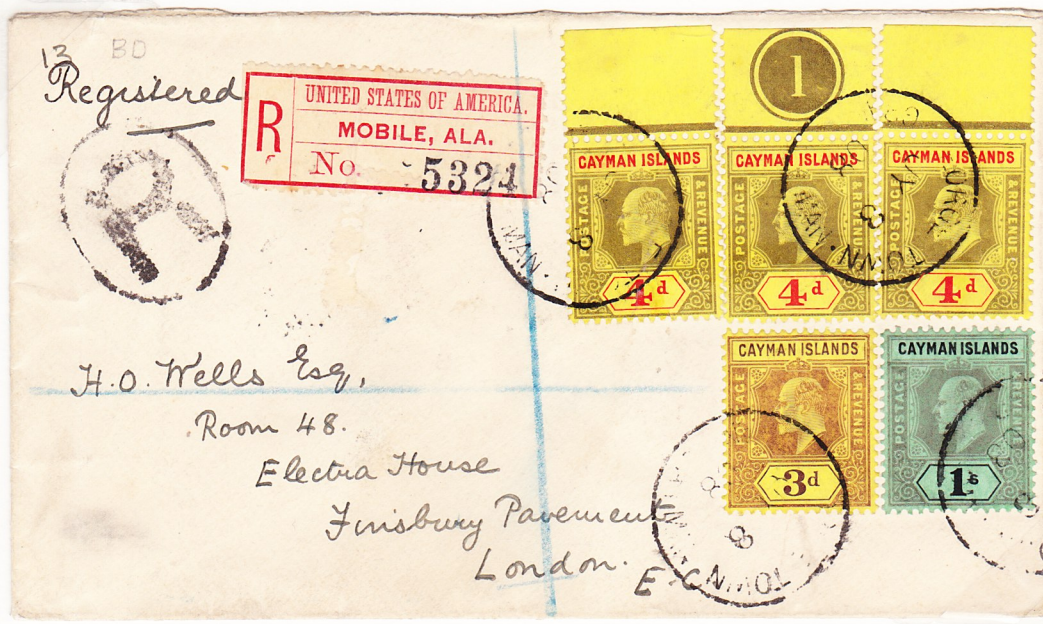


Only 6 or 7 examples Possible.



Only 25 examples of the 10s value possible





3d, 3 x 4d & 1/- over-paying the Empire 1 ounce registered rate to England.  
 Cancelled George Town type 4, dated JY 8 08.  
**The right hand 4d value has the 'Spaven Flaw'.**



KEVII 3d and KGV 2d pair overpaying the 4½d non-Empire registered rate to France.  
 Cancelled Georgetown type 5, dated AU 26 14.  
**The 3d value has the 'Spaven Flaw'.**  
 When this letter was sent, there were no KGV 3d stamps on hand.