

SAINT LUCIA - THE BRITISH STAMP PERIOD 1858 - 1860

THE 1D, 4D AND 6D VALUES

LETTERS TO THE UNITED KINGDOM FROM ST. LUCIA HAD TO BE PREPAID FROM THE 1ST APRIL 1858. THE BRITISH AUTHORITIES AUTHORIZED THE USE OF CERTAIN UNITED KINGDOM ADHESIVES IN ST LUCIA AND THIS INFORMATION WAS CONVEYED TO THE COLONIAL POSTMASTER BY ROWLAND HILL.¹ SUPPLIES FOR 2 MONTHS CONSUMPTION (£50) WERE SENT OUT ON ABOUT THE 16TH APRIL 1858 CONSISTING OF 1D, 4D & 6D STAMPS ALONG WITH AN OBLITERATING TOOL MARKED "A11".



FURTHER SUPPLIES OF STAMPS MUST HAVE BEEN SENT OUT LATER, BUT NO RECORDS EXIST OF THE NUMBERS INVOLVED, BUT THEY WOULD HAVE BEEN SMALL AS AT THIS TIME IT IS PROBABLE THAT ONLY ABOUT 200 PEOPLE ON THE ISLAND COULD READ OR WRITE.

THE 1D ROSE RED, 4D CARMINE AND 6D LILAC



BPA CERT.
PROVENANCE: FILER



RPSL CERT.
PROVENANCE : R URWICK



BPA CERT.

GENERAL POST OFFICE
APRIL 16, 1858

SIR,

I AM DIRECTED BY THE POSTMASTER GENERAL TO ACQUAINT YOU THAT THE LORDS OF HER MAJESTY'S TREASURY HAVE AUTHORIZED BRITISH POSTAGE STAMPS TO BE USED IN PAYMENT.....

THE FOLLOWING DENOMINATIONS OF BRITISH POSTAGE STAMPS MUST HENCEFORTH BE KEPT AT YOUR OFFICE FOR SALE TO THE PUBLIC, VIZ;

SIX PENNY
FOUR PENNY
AND PENNY STAMPS

BY FAR THE MOST COMMON VALUE IS THE 6D FOR THE SINGLE RATE TO THE UK, FOLLOWED BY THE 4D FOR THE WESTERN HEMISPHERE RATE. THE 1D IS A RARITY.

2D AND 1S VALUES ARE KNOWN STRUCK WITH "A 11" BUT IT IS NOT CLEAR HOW THESE CAME TO BE USED IN THE ISLAND. THE STAMPS WERE AUTHORISED FOR USE UNTIL MAY 1860. THERE WAS THEN A GAP UNTIL THE NEW ST. LUCIA ADHESIVES WERE READY IN DECEMBER 1860.

¹ Piton Post or Notes on the Philately of Saint Lucia. Alister Kinnon. Page 6.

SAINT LUCIA - FIRST ISSUES OF 1860 IN RED, BLUE AND GREEN

PRINTED BY PERKINS BACON LIMITED

THE DIE FOR THE FIRST STAMPS WAS FINISHED ON 16TH OCTOBER 1860 AND USED THE QUEEN VICTORIA HEAD ENGRAVED FOR THEM IN MAY BY C. H. JEENS FOR USE ON THE 9D DUTY OF SOUTH AUSTRALIA. HE WAS PAID £2 12S 6D FOR THE DRAWING AND £9 9S FOR THE ENGRAVING.

THERE IS NO RECORD IN PERKINS BACON ENGRAVING BOOK OF THE DATE WHEN THE STEEL PLATE WAS MADE FOR THE STAMPS, BUT IT MUST HAVE BEEN FINISHED VERY SHORTLY AFTER THE COMPLETION OF THE DIE AS THE FIRST SUPPLY OF STAMPS WAS INVOICED ON NOVEMBER 14, 1860.¹



A VERTICAL OVAL BIG ENOUGH FOR THE HEAD WAS CLEARED IN THE ENGRAVED BACKGROUND. THIS WAS SURROUNDED BY A PLAIN BAND WITH "ST LUCIA" AND "POSTAGE". THIS DESIGN IS CONSIDERED TO BE PERKINS BACON'S MOST ELEGANT.

¹ The St. Lucia Philatelist Number One 1948 Pages 8-10.

SAINT LUCIA - FIRST ISSUES OF 1860 IN RED, BLUE AND GREEN

PRINTED BY PERKINS BACON LIMITED

THESE FIRST ISSUES WERE LINE ENGRAVED AND PRINTED FROM A PLATE OF 240 IMPRESSIONS. TO SAVE MONEY, ONLY ONE PLATE WAS ORDERED AND THE DUTY WAS NOT ENGRAVED IN THE DESIGN. THE COLOUR OF THE PRINTING DETERMINED THE VALUE OF THE STAMP, ROSE-RED FOR THE 1D, BLUE FOR THE 4D AND GREEN FOR THE 6D.

THESE STAMPS OF THE PERKINS BACON PRINTING ARE SCARCE, WITH ONLY 36 SHEETS IN RED, 13 SHEETS IN BLUE AND 17 SHEETS IN GREEN DELIVERED TO THE ST. LUCIAN AUTHORITIES (A TOTAL OF 15,840 STAMPS IN ALL). THESE SHEETS WERE DISPATCHED TO THE ISLAND BY PACKET ON THE 17TH NOVEMBER 1860.¹ ALTHOUGH A TOTAL OF 100 SHEETS WERE PRINTED, THE REMAINDER WERE RETAINED AND EVENTUALLY USED FOR OTHER PURPOSES; ONE ALMOST COMPLETE SHEET OF EACH COLOUR WAS DISCOVERED IN 1896 AND EXAMPLES CAME ON TO THE MARKET (THE "CROWN AGENTS" FIND).

EXAMPLE IN RED WITH MANUSCRIPT "*SPECIMEN*" PLACED DIAGONALLY IN BLACK INK



PROVENANCE: HOMAN, FILER

BPA CERTIFICATE NUMBER 64198

EXAMPLES IN RED AND BLUE WITH MANUSCRIPT "*SPECIMEN*" AT DIFFERENT ANGLES



PROVENANCE: JAFFÉ

THE EXAMPLES ABOVE, ARE OF A HANDFUL KNOWN WHICH HAVE BEEN MARKED IN HAND "*SPECIMEN*" IN EITHER BLACK OR RED INK. THIS WAS APPENDED EITHER UPWARDS OR DOWNWARDS AND THE DIRECTION DOES NOT APPEAR TO BE SIGNIFICANT.² IT IS PROBABLE THAT THESE WERE KEPT BY PERKINS BACON AS PART OF THEIR OFFICIAL RECORDS.

THE FIRST ISSUE OF THESE STAMPS WAS MADE ON THE 18TH DECEMBER 1860 AND DETAILS WERE PRINTED IN THE ISLAND GAZETTE FOR THE 19TH.³

¹ The Perkins, Bacon Records. P. De Worms. RPS. Pages 495-504.

² Godden's Gazette. January 1938.

³ Piton Post or Notes on the Philately of Saint Lucia. Alister Kinnon. Page 12.

SAINT LUCIA - FIRST ISSUES OF 1860 IN RED, BLUE AND GREEN

PRINTED BY PERKINS BACON LIMITED

ROSE-RED (1D)

JUST 36 SHEETS WERE PRINTED IN RED (8640 STAMPS). THESE SHEETS WERE DISPATCHED TO THE ISLAND BY PACKET ON THE 17TH NOVEMBER 1860.¹ THE MAJORITY OF THE MINT BLOCKS IN COLLECTORS' HANDS CAME FROM THE "CROWN AGENTS" FIND OF 1896.

THE STAMPS WERE PRINTED ON PAPER PRODUCED BY RUSH MILLS AT NORTHAMPTON AND UNDER THE CONTROL OF STACEY WISE. THE PAPER WAS WATERMARKED BY A SMALL SIX POINTED STAR.

A FRESH AND BEAUTIFUL MINT BLOCK OF 4



THE "DOUBLE" IMPRESSION



PROVENANCE MESSENGER, MOLLY, FILER
BPA CERTIFICATE

THE STAMPS WERE PRINTED BY A MR. DIX ON THE 10TH NOVEMBER, AND PERFORATED BY A MISS STEWART ON THE 14TH NOVEMBER. THE PERFORATION NEEDLES WERE SET TO 14 TO 16, INTERMEDIATE BETWEEN THE CLEAN-CUT AND ROUGH FORMS OF PERFORATION. THE PERFORATING NEEDLES OFTEN BECAME CLOGGED. THE FIRST ISSUE OF THESE STAMPS WAS MADE ON THE 18TH DECEMBER 1860 AND DETAILS WERE PRINTED IN THE ISLAND GAZETTE FOR THE 19TH.²

POST OFFICE, ST LUCIA
18TH DECEMBER, 1860.

POSTAGE STAMPS FOR THE PREPAYMENT OF LETTERS MAY BE OBTAINED AT THIS OFFICE AT THE FOLLOWING RATES, VIZ:

STAMPS OF A RED COLOUR AT ONE PENNY.			
"	"	BLUE	"
"	"	GREEN	"
			FOURPENCE.
			SIXPENCE.

THIS NOTICE ESTABLISHED THE POSTAL VALUE OF EACH STAMP ACCORDING TO COLOUR.

¹ The Perkins, Bacon Records. P. De Worms. RPS. Pages 495-504.

² Piton Post or Notes on the Philately of Saint Lucia. Alister Kinnon. Page 12.

SAINT LUCIA - FIRST ISSUES OF 1860 IN RED, BLUE AND GREEN

PRINTED BY PERKINS BACON LIMITED

BLUE (4D)

IN THIS CASE THE 4D VALUE WAS BLUE. THE BLUE STAMPS ARE PARTICULARLY SCARCE FROM THIS FIRST PRINTING WITH JUST 13 SHEETS PRINTED (3120 STAMPS). SOME VARIATION IN THE SHADE OF BLUE HAS BEEN RECORDED AND MAY HAVE BEEN CAUSED BY SLIGHT DIFFERENCE IN MIXING THE INKS AT THE WORKS AND/OR COLOUR CHANGES BROUGHT ABOUT BY EXPOSURE TO THE ATMOSPHERE OVER A PERIOD OF TIME.¹

A RARE AND BEAUTIFUL MINT LEFT HAND MARGINAL BLOCK OF 4



THE FIRST PRINTING IS VERY DIFFICULT TO PLATE AS MANY OF THE FRESH ENTRIES AND RE-ENTRIES ETC DO NOT SHOW UNTIL LATER PRINTING HAD WORN THE SURFACE OF THE PLATE. THIS BLOCK IS PROBABLY POSITION 37-38/49-50 IN THE SHEET. THERE IS A MARKED DASH OR BLOB BETWEEN THE "L" AND "U" OF "LUCIA" IN THE BOTTOM LEFT HAND STAMP.

MINT SINGLES



THE PAPER WAS WATERMARKED AROUND THE MARGIN, "POSTAGE" TWICE AT THE SIDES AND ONCE AT THE TOP AND BOTTOM, THE SPACES BETWEEN BEING FILLED BY FIVE PARALLEL LINES WHICH ARE QUITE CLEARLY SEEN IN THE MARGIN OF THE BLOCK OF 4 ABOVE.

¹ Piton Post or Notes on the Philately of Saint Lucia. Alister Kinnon. Page 13.

SAINT LUCIA - FIRST ISSUES OF 1860 IN RED, BLUE AND
GREEN

PRINTED BY PERKINS BACON LIMITED

GREEN (6D)



PROVENANCE: BOOTH, SNOWDEN



RPS,L CERT

A SCARCE POSITIONAL PIECE



PROVENANCE: FILER

DEEP GREEN



PROVENANCE:
BALLIE,
FILER

THESE WERE THE ONLY PRINTINGS UNDERTAKEN BY PERKINS BACON LTD. THE CROWN AGENTS TOOK OVER THESE PLATES ON THE 28TH JANUARY 1862 AND FURTHER PRINTING WAS THEN UNDERTAKEN BY MESSERS DE LA RUE & CO.¹

¹ The De La Rue History of British and Foreign Postage Stamps. J. Easton. Faber & Faber. 1958.

*SAINT LUCIA - THE SECOND ISSUE - THE DE LA RUE
PRINTINGS OF 1863*

PRINTED BY DE LA RUE LIMITED

THE PROOFS

THE PRINTING PLATE WAS PASSED TO DE LA RUE IN 1862 BECAUSE OF DIFFICULTIES EXPERIENCED BY PERKINS BACON IN FULFILLING THEIR CONTRACT (VOLUME OF WORK) AND SOME SERIOUS ISSUES OF CONFIDENCE BETWEEN THEM AND THE CROWN AGENTS WITH REGARDS TO "CANCELLED" STAMPS PROVIDED ELSEWHERE.

ONLY SMALL NUMBERS OF THESE STAMPS WERE ISSUED BY DE LA RUE IN COLOURS OF LAKE, INDIGO AND EMERALD GREEN.¹

THIS PRINTING WAS ON PAPER WATERMARKED CROWN CC AND IS OF A LESSER QUALITY THAN THAT PRODUCED BY PERKINS BACON. THE PRINT IS NOT AS CLEAR AND, IN GENERAL, STAMPS PRINTED FROM THESE PLATES SHOW MORE SMEARING OF THE COLOURS, DETRACTING SOMEWHAT FROM THE ELEGANCE OF THE DESIGN. IT IS QUITE COMMON TO SEE EXAMPLES WITH DARK SHADES OF COLOUR ON THE RIGHT HAND EDGES OF THE STAMPS AND COLOUR OVER-RUN IN THE MARGINS BETWEEN THE STAMPS.

IMPERFORATE PLATE PROOF IN LAKE (1D) IMPRIMATUR



BPA CERT.
PROVENANCE: FILER

IMPERFORATE PLATE PROOFS IN INDIGO (4D) IMPRIMATUR



BPA CERT.
PROVENANCE: FILER



CERT.
PROVENANCE: JAFFÉ

THE EXACT DATE OF THIS PRINTING IS NOT KNOWN, BUT ALTHOUGH NOT INVOICED UNTIL THE 29TH JANUARY 1864, IT WAS PROBABLY SOME TIME DURING 1863.²

¹ The De La Rue History of British and Foreign Postage Stamps. J. Easton. Faber & Faber. 1958.

² Ibid.

SAINT LUCIA - THE SECOND ISSUE - THE DE LA RUE
PRINTINGS OF 1863

PRINTED BY DE LA RUE LIMITED

LAKE RED (1D)

THIS PLATE WAS PUT BACK IN TO USE AFTER A PERIOD OF NEARLY THREE YEARS, THIS TIME BY DE LA RUE WHO WERE REQUIRED TO RETAIN THE SAME THREE COLOURS FOR THE DUTIES REQUIRED BY THE SAINT LUCIAN AUTHORITIES. THE PAPER USED WAS WATERMARKED CROWN "CC" AND PERFORATED AT A GAUGE OF 12½. THESE STAMPS WERE INVOICED ON THE 29TH JANUARY 1864, BUT WERE ALMOST CERTAINLY PRINTED DURING 1863.

LAKE RED (1D)



LAKE RED (1D) WITH WATERMARK REVERSED



MULTIPLES ARE SCARCE. THE TOTAL PRINTING IN LAKE WAS ONLY 42 SHEETS (10080 STAMPS).

DE LA RUE WAS NOT NECESSARILY AS CONCERNED AS PERKINS BACON HAD BEEN AS TO WHICH WAY THE WATERMARKED PAPER WAS FED IN TO THE PRINTING PRESSES; NOR APPARENTLY WAS THE CUSTOMER, IN TERMS OF THE CROWN AGENTS, EXAMPLES ARE COMMON WITH THE WATERMARK REVERSED, AND ARE KNOWN TO EXIST WITH THE WATERMARK INVERTED IN THE CASES OF THE LAKE AND EMERALD-GREEN PRINTINGS.

*SAINT LUCIA - THE SECOND ISSUE - THE DE LA RUE
PRINTINGS OF 1863*

PRINTED BY DE LA RUE LIMITED

INDIGO (4D)

DE LA RUE BOUGHT IN A PERFORATING MACHINE IN 1862 TO COPE WITH THE NEW DEMANDS FROM THE CROWN AGENTS. THE GAUGE OF THIS WAS SET AT 12½. THERE ARE A NUMBER OF EXAMPLES OF THEIR PERFORATING WORK WHICH CLEARLY SHOW THAT THE PERFORATING WAS NOT ALWAYS DONE FROM THE FRONT OF THE SHEET, THERE IS NO REGULARITY ABOUT THIS, ITS SEEMS JUST CHANCE AS TO THE WAY THE SHEETS WERE FED IN TO THE MACHINE.

SPECIMEN (SAMUEL TYPE D3)



INDIGO (4D)



BPA CERT

THIS COLOUR WAS ISSUED IN THE SMALLEST NUMBER. THE TOTAL PRINTING IN INDIGO WAS JUST 13 SHEETS (3120 STAMPS). EXAMPLES ARE THEREFORE SCARCE.

IN EARLY 1863 THE RATE FOR A PACKET LETTER TO THE UK WAS 6D, BUT ON THE 1ST APRIL IT WAS INCREASED TO 1/- PER HALF OUNCE, THIS BEING ANNOUNCED IN THE GAZETTE FOR THE 28TH JANUARY.¹

¹ St. Lucia - A Philatelic History. Roses Caribbean Handbook No. 3. G.G. Ritchie. Page 15.

SAINT LUCIA - THE SECOND ISSUE - THE DE LA RUE
PRINTINGS OF 1863

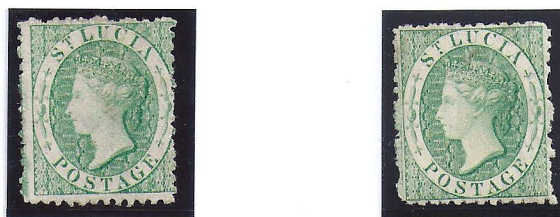
PRINTED BY DE LA RUE LIMITED

EMERALD-GREEN (6D)

EMERALD -GREEN (6D) WITH WATERMARK REVERSED



A BEAUTIFUL MINT BLOCK OF FOUR



THIS COLOUR WAS ISSUED IN THE NEXT SMALLEST NUMBER. THE TOTAL PRINTING IN EMERALD-GREEN WAS JUST 23 SHEETS (5520 STAMPS). MULTIPLES ARE SCARCE.

ON THE 1ST APRIL 1863 THE RATE FOR A LETTER UNDER 1/2 OUNCE SENT BY PRIVATE SHIP WAS REDUCED TO 3D, HEAVIER ITEMS BEING CHARGED IN PROPORTION.¹

¹ St. Lucia - A Philatelic History. Roses Caribbean Handbook No. 3. G.G. Ritchie. Page 15.

SAINT LUCIA - THE SECOND ISSUE - THE DE LA RUE
PRINTINGS OF 1863

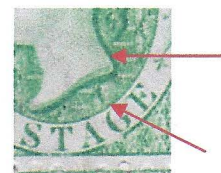
PRINTED BY DE LA RUE LIMITED

PREPARED FOR USE BUT NOT ISSUED

TWO UNISSUED STAMPS WERE PREPARED AT THIS TIME. THESE WERE THE "*Half/penny*" ON (6D) EMERALD-GREEN AND THE "*Six/pence*" ON (4D) BLUE. THESE STAMPS ARE SOMETHING OF AN ENIGMA WITH VERY LITTLE KNOWN AS TO WHY THEY WERE PREPARED. THEY MAY HAVE BEEN TRIALS TO EXPRESS THE VALUE ON THE STAMP, BUT THERE WAS NO NEED FOR A 1/2D DUTY AT THIS TIME.

A RARE BLOCK "*HALF/PENNY*" ON (6D) EMERALD-GREEN

"E" IN "*PENNY*" MISSING



RPS,L CERTIFICATE

THIS PIECE IS FROM POSITION 53/54 TO 101/102 OF THE SHEET. THE KEY POSITIONAL STAMP IS THE TOP RIGHT HAND UNIT (POSITION 54) WHICH SHOWS WHITE PATCHES (POSSIBLY A WEAK RE-ENTRY) BELOW THE QUEEN'S NECK AT THE RIGHT.

THE VERTICAL ROWS OF PERFORATIONS APPEAR TO HAVE BEEN PUNCHED FROM THE BACK OF THE SHEETS, THE HORIZONTAL ROWS FROM THE FRONT.

SAINT LUCIA - THE SECOND ISSUE - THE DE LA RUE
PRINTINGS OF 1863

PRINTED BY DE LA RUE LIMITED

PREPARED FOR USE BUT NOT ISSUED

THE "Six/pence" ON (4D) INDIGO IS A SCARCE STAMP.

TWO FINE EXAMPLES OVERPRINTED "SIX/PENCE" ON (4D) INDIGO



PROVENANCE: FILER
CERTIFICATE

THE EXAMPLE BELOW IS OF CONSIDERABLE RARITY, SHOWING A MAJOR RE-ENTRY WHERE THE TOP AND BOTTOM FRAME LINES AND WORDING IS DOUBLED ABOUT $\frac{3}{4}$ MM UPWARDS. THIS IS POSITION NUMBER 205 IN THE SHEET.



PROVENANCE: FILER
RPS,L CERTIFICATE
HOLCOMBE CERTIFICATE

SAINT LUCIA - THE THIRD ISSUE - THE DE LA RUE
PRINTINGS OF 1864 & 1876

PRINTED BY DE LA RUE LIMITED

THE PROOFS

ON THE 1ST APRIL 1864 THE RATE FOR A PACKET LETTER TO THE UK WAS INCREASED FROM 6D TO 1/- PER HALF OUNCE, THIS WAS ANNOUNCED IN *THE GAZETTE* FOR THE 28TH JANUARY. AT THE SAME TIME A LETTER SENT BY PRIVATE SHIP WAS REDUCED FROM 6D TO 3D PER HALF OUNCE WITH HEAVIER ITEMS BEING CHARGED IN PROPORTION. THESE CHANGES MEANT THAT THERE WAS A NEED FOR ADDITIONAL VALUE OF 1/- TO SUPPLEMENT THE EXISTING DUTIES. DE LA RUE PRINTED THE STAMPS IN THE NEW COLOURS OF BLACK, LIGHT YELLOW, LILAC AND ORANGE RED FOR THE RESPECTIVE VALUES OF 1D, 4D, 6D AND 1/-.¹

AN IMPERFORATE PROOF PAIR IN BLACK WITH THE WATERMARK REVERSED



RPS,L CERTIFICATE

AN IMPERFORATE PROOF IN ORANGE



THIS ISSUE WAS PRINTED ON CROWN CC PAPER AND PERFORATED 12½. THE STAMPS WERE ISSUED ON THE 19TH NOVEMBER 1864 AND NOTIFICATION WAS INCLUDED IN *THE GAZETTE* FOR NOVEMBER 25TH:

GOVERNMENT OFFICE
19TH NOVEMBER 1864

NOTICE IS HEREBY GIVEN THAT, ON OR AFTER THIS DAY, POSTAGE STAMPS OF THE COLOURS AND DENOMINATIONS UNDER MENTIONED MAY BE OBTAINED AT THE POST OFFICE, AND THAT THE ISSUE OF THOSE HITHERTO HAS BEEN STOPPED.

ORANGE RED
LILAC
LIGHT YELLOW
BLACK

ONE SHILLING
SIX PENCE
FOUR PENCE
ONE PENNY

PERSONS, HOWEVER, WHO HAVE ANY OF THE OLD STAMPS IN THEIR POSSESSION, ARE INFORMED THAT, FOR THE PRESENT THEY WILL CONTINUE TO BE RECEIVED ON LETTERS &C.

(SIGNED) J.M. GRANT
ADMINISTRATOR

¹ The first printing in the new colours was invoiced on the 29th October 1864 for 138 sheets in Black, 11 sheets in Light Yellow, 23 sheets in Lilac and 12 sheets in Orange Red.

SAINT LUCIA - THE THIRD ISSUE - THE DE LA RUE
PRINTINGS OF 1864

PRINTED BY DE LA RUE LIMITED

THE ISSUED STAMPS PERFORATED 12½

RED ORANGE (1/-)

THERE WERE SEVERAL SUBSEQUENT PRINTINGS IN THIS COLOUR. ¹

IN BROWN ORANGE, ORANGE AND PALE ORANGE (THE RIGHT HAND 3 WITH REVERSED WATERMARK)



PROVENANCE: JAFFÉ PROVENANCE: JAFFÉ

THE LARGEST KNOWN BLOCK - A BEAUTIFUL MARGINAL BLOCK OF 12 IN PALE ORANGE



CERTIFICATE

THE MARGIN SHOWS “..OLONIE..” READING DOWNWARDS AS PART OF THE WATERMARK DEVICE “CROWN COLONIES” THIS PIECE IS PLATED AS POSITIONS 69-72/93-96 IN THE SHEET OF 240 IMPRESSIONS.

¹ The first printing was 12 sheets, followed by 30 sheets on 26th February 1866 (described as Red), 34 sheets on 12th May 1868 and 33 sheets on 13th May 1870 (both described as Orange), 26 sheets on 17th April 1872 (described as Orange Red) and a final 34 sheets on 30th April 1874 – a total of 40,560 stamps.

SAINT LUCIA - THE THIRD ISSUE - THE DE LA RUE
PRINTINGS OF 1876

PRINTED BY DE LA RUE LIMITED

THE ISSUED STAMPS PERFORATED 14

BLACK (1D), YELLOW (4D), LILAC (6D) AND ORANGE (1S)

WITH THE MAY AND SEPTEMBER 1876 PRINTING DE LA RUE USED A NEW LINE PERFORATING MACHINE WHICH THEY HAD PURCHASED AND WHICH HAD A GAUGE OF 14. THERE WERE SEVERAL SUBSEQUENT PRINTINGS IN THESE COLOURS. ¹



PROVENANCE: FORSYTH

A VERY FEW EXAMPLES ARE KNOWN IN PAIRS IMPERFORATE VERTICALLY. ATTEMPTS WERE MADE LOCALLY TO EASE SEPARATION OF SUCH ITEMS BY PERFORATING BETWEEN HORIZONTAL STAMPS BY USING A PIN. LESS THAN A HANDFUL OF SUCH ITEMS ARE RECORDED.

PAIR OF LILAC (6D) IMPERFORATE VERTICALLY WITH UNOFFICIAL PIN PERFORATION



BPA CERTIFICATE

¹ These and subsequent printings were perforated 14. Dates are: BLACK 16th May 1876 sheets, 29th September 1878 40 sheets, 28th March 1881 10 sheets and 29th June 1881 44 sheets (a total of 37,920 stamps). YELLOW 28th March 1881 30 sheets and 29th June 1881 45 sheets (a total of 18,000 stamps).

SAINT LUCIA - THE DE LA RUE PRINTINGS OF 1881

THE ISSUED STAMPS PERFORATED 14

GREEN ($\frac{1}{2}$ D) AND RED ($2\frac{1}{2}$ D)

ST. LUCIA JOINED THE UPU ON THE 1ST FEBRUARY 1881, AND THE REGULATIONS REQUIRED THAT THE VALUE OF THE DUTY WAS CLEARLY DISPLAYED ON EACH STAMP. UNTIL THIS TIME THE DUTY WAS SET SOLELY BY THE COLOUR OF THE ADHESIVE AS COSTS DICTATED THE PRODUCTION OF ONLY ONE PRINTING PLATE OF 240 UNITS. DE LA RUE PREPARED OVERPRINT PLATES (THIS REQUIRED CAREFUL REGISTRATION WITH THE SINGLE ORIGINAL PRINTING PLATE) AND CHARGED THE CROWN AGENTS £3 AND 3S FOR EACH OVERPRINT VALUE REQUIRED.

THESE WERE PRINTED ON CROWN CC WATERMARKED PAPER.

(BLOCK SHEET POSITION 127-128/139-140)



THERE WAS AN URGENT NEED FOR THESE OVERPRINTED STAMPS AND THEY WERE PUT ON SALE IN CASTRIES ON THE 21ST SEPTEMBER 1881.¹

¹ The $\frac{1}{2}$ Green and $2\frac{1}{2}$ Red overprint plate was invoiced on the 26th August 1881 and 53 sheets (12,720 stamps) were invoiced in Green and 55 sheets (13,200 stamps) in Red on the same date.

SAINT LUCIA - THE FIFTH ISSUE - PRINTINGS OF 1882-4

PRINTED BY DE LA RUE LIMITED

THE ISSUED STAMPS PERFORATED 14 ON CROWN CA PAPER

OVERPRINT PLATES FOR THESE VALUES WERE INVOICED ON THE 25TH FEBRUARY 1882 AND WERE SUPPLIED ON THE NEW CROWN CA PAPER. ALTHOUGH THE INVOICE DATE IS KNOWN THERE IS NO EVIDENCE OF THE DATE OF ISSUE OF THESE ADHESIVES.¹



PERF 12



PROVENANCE: JAFFÉ
RPS,L CERT

CERT

ONLY 11 SHEETS (2,640 ADHESIVES) OF THE ONE SHILLING WERE ISSUED. MULTIPLES ARE VERY RARE. A BLOCK OF SIX EXISTS IN THE ROYAL COLLECTION.



PROVENANCE: MESSENGER
CERT

THE CHANGE TO CA WATERMARK COINCIDED WITH THE PREPARATION OF A NEW DANDY ROLLER.

THIS ISSUE IS THE END OF THE OVERPRINTS ON THE CLASSIC LINE ENGRAVED ISSUES. THESE STAMPS WERE REPLACED BY DE LA RUE WITH THE KEY PLATE DESIGNS IN JULY 1883. ALL WAS WELL UNTIL A SHORTAGE OF LOW VALUES OCCURRED IN 1891

¹ Numbers issued were: ½d 19,440. 1d 37,200. 4d 25,200. 6d 9,600. 1s 2,640.

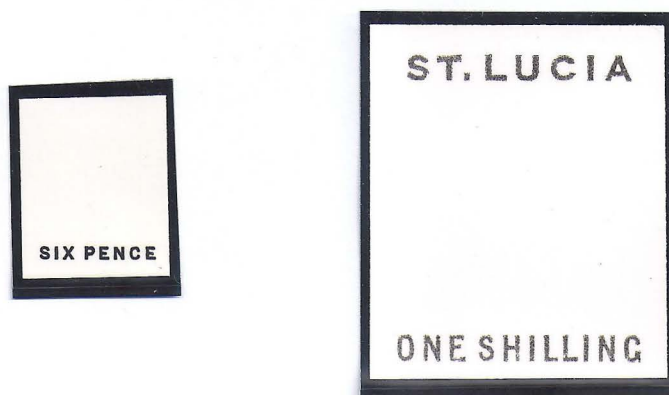
SAINT LUCIA - THE De La RUE KEY PLATE ADHESIVES -
DIE 1

1886 SPERATI DIE PROOF AND FORGERY

THIS PAGE SHOWS A SPERATI¹ REPRODUCTION OF THE 6D IN DIE PROOF FORM, IN BLACK, STAMPED "REPRODUCTION INTERDITE" AND SIGNED IN PENCIL "JEAN DE SPERATI". IT IS STAMPED ON THE REVERSE "SPERATI REPRODUCTION 67".²



ALSO SHOWN ARE THE PHOTOGRAPHIC PRINTS FROM THE NEGATIVES FROM WHICH SPERATI MADE THE CLICHÉS FOR HIS REPRODUCTIONS, INCLUDING THE 1S DUTY PLATE.



THE FINISHED ARTICLE INCLUDING FAKE CANCELLATION PRODUCED IN 1953.
(THIS IS ONE OF HIS LAST FORGERIES)³



¹ Jean De Sperati – Forger 1884 – 1957.

² Ex BPA archives.

³ BPA Cert stating genuine, RPS,L Cert stating forgery!

SAINT LUCIA - OVERPRINTS AND SURCHARGES 1881 - 92

THE De La RUE KEY PLATE ADHESIVES - SURCHARGES

DIE 1 - PRINTED IN TWO COLOURS AND FUGITIVE INKS

THE PROVISIONALS OF 1891-92 WERE THE ONLY SURCHARGED STAMPS OF ST. LUCIA AND WERE PRODUCED LOCALLY FOLLOWING A SHORTAGE OF LOW VALUES.¹

TO PROVIDE 1/2D VALUES, 4300 COPIES OF MIXED DIE 1 AND DIE 2 3D STAMPS WERE SURCHARGED ONE HALF PENNY IN THREE LINES. THERE ARE A NUMBER OF VARIETIES OF SURCHARGES ON BOTH DIES.

"ONE HALF PENNY" ON 3D DULL MAUVE AND GREEN



THE LEFT HAND STAMP OF THIS PAIR SHOWS THE VARIETY
SMALL "A" IN "HALF"



THE LONDON PHILATELIST VOL 1 NO.8 AUGUST 1892 - CORRESPONDENCE

*"DEAR SIR, A FRIEND OF MINE, MR. C.H. NEVILL, HAVING LATELY RETURNED FROM A TRIP TO ST. LUCIA, OBTAINED FOR ME THREE OF THE SURCHARGED STAMPS ISSUED BETWEEN JANUARY AND APRIL 1892, WHICH APPEAR IN GIBBON'S ADDENDUM, No. 28. HE ASCERTAINED FROM THE POSTMASTER-GENERAL THERE THAT ABOUT £60 WORTH ONLY OF "ONE PENNY" ON 4D. WERE PRINTED, ONLY ABOUT £8 WORTH OF THE "ONE HALF PENNY" ON 3D., AND FROM £10 TO £12 WORTH OF 1/2D. ON HALF 6D. THE LATTER THE POSTMASTER-GENERAL DID NOT INTEND TO PRINT, BUT DURING A TEMPORARY ABSENCE FROM BUSINESS OWING TO ILLNESS, THEY RAN SHORT OF 1/2D. STAMPS, AND THE EMPLOYEES, OR SOME ONE IN THE OFFICE STRUCK THEM OFF. THERE ARE NON TO BE GOT AT THE OFFICES IN THE ISLAND, AND HE ONLY OBTAINED THEM FOR ME WITH DIFFICULTY IN THE ISLAND, AND AT 120 TIMES FACE VALUE!!!....."*²³

¹ St. Lucia – A Philatelic History. Roses Caribbean Handbook No. 3. G.G. Ritchie. Page 18.

² By kind permission of The Royal Philatelic Society, London.

³ These figures tally approximately to the accepted numbers of 6700 1d, 4300 1/2d and 9600 1/2d bisects.

SAINT LUCIA - OVERPRINTS AND SURCHARGES 1881 - 92

THE De La RUE KEY PLATE ADHESIVES - SURCHARGES

DIE 2 - PRINTED IN TWO COLOURS AND FUGITIVE INKS

"ONE HALF PENNY" ON 3D DULL MAUVE AND GREEN



PROVENANCE: JAFFÉ

WITH MISPLACED SURCHARGE



PROVENANCE: JAFFÉ

DOUBLE SURCHARGE



BPA CERT.

INVERTED SURCHARGE



RPS,L CERT.
PROVENANCE: E YOUNG

SMALL "A" IN "HALF"



"ONE" MISPLACED
("O" OVER "H")



THE LONDON PHILATELIST VOL 3 1894

"ST. LUCIA. THE AMERICAN JOURNAL OF PHILATELY VOUCHES FOR THE PROVISIONAL ONE HALF PENNY ON THREE PENCE WITH A DOUBLE SURCHARGE ON THE FACE....."¹

¹ By kind permission of The Royal Philatelic Society, London.

SAINT LUCIA - OVERPRINTS AND SURCHARGES 1881 - 92

THE De La RUE KEY PLATE ADHESIVES - SURCHARGES

DIE 2 - PRINTED IN TWO COLOURS AND FUGITIVE INKS

"ONE HALF PENNY" ON 3D DULL MAUVE AND GREEN IN A HALF PANE OF 30 SHOWING THE COMPLETE SETTING OF THE SURCHARGE (ONLY 143 HALF PANES OF EITHER DIE WERE SURCHARGED)



THIS HALF PANE IS EXCEEDINGLY RARE (POSSIBLY THE ONLY SURVIVOR)

THE SURCHARGE VARIETIES ARE:

- No. 6 DEFECTIVE "F" OF "HALF" AND "Y" OF "PENNY"
- No. 12 SMALL "O" OF "ONE"
- No. 15 SMALL "A" IN "HALF". DEFECTIVE UPRIGHTS TO SECOND "N" OF "PENNY"
- No. 20 RIGHT UPRIGHT OF FIRST "N" OF "PENNY" MISSING
- No. 24 "O" OF "ONE" OVER "H" OF "HALF"
- No. 30 "O" OF "ONE" TILTED TO RIGHT

SAINT LUCIA - THE De La RUE KING EDWARD VII KEYPLATE ISSUE
Of 1904-10

THE DEFINITIVES

THE 1904 LONG SET WAS ALSO PRINTED ON ORDINARY PAPER WHEN THE BARYTA PAPER WAS CONFINED TO THE COLOURED PAPERS (THE CHALKY SURFACE PAPER HAD A TENDENCY TO RUB ON THE SURFACE).

THE 3D DUTY WAS ADDED TO THE SERIES.

THE SIX DEFINITIVES OF THE 1904 ISSUE ON NORMAL PAPER.



THE 5S IS RARE IN A
PLATE BLOCK

PROVENANCE: J WILLIAMS

SAINT LUCIA - THE KING GEORGE V WARTAX OVERPRINT

THE LOCAL OVERPRINT WAS BELIEVED TO HAVE BEEN ISSUED FOR SALE ON THE 1ST JUNE 1916. THERE IS NO RECORD OF THE NUMBERS OVERPRINTED.¹

ALBINO VARIETY

WHEN THE SHEETS OF THE 1D SCARLET WERE INSERTED IN TO THE PRESS FOR OVERPRINTING, THE TOP MARGIN OF THE SHEET WAS FOLDED UNDER THE TOP ROW OF STAMPS, SO THAT MARGINAL EXAMPLES FROM THE TOP ROW SHOW AN INVERTED ALBINO IMPRESSION. THIS PIECE SHOWS A BOTTOM RIGHT HAND CORNER USED VERTICAL STRIP OF THREE WHERE REVERSED ALBINO OVERPRINTS CAN BE SEEN IN THE MARGIN. VERY EARLY USE (9TH JUNE 1916).



THE ONLY KNOWN EXAMPLE

PROVENANCE: JGM DAVIES

CARMINE (VERY RARE)



ONE OF TWO KNOWN
KNOWN EXAMPLES²

PROVENANCE: JGM DAVIES

¹ A reasonable estimate for the numbers overprinted is 50,000. Revenue £208. 6s. 8d

² It is believed that only one sheet of the 1d Carmine (from plate 1b) was locally overprinted with "WAR TAX".

SAINT LUCIA - QUEEN ELIZABETH II - POSTAGE STAMP CENTENARY

PRINTED BY WATERLOW

THERE WERE THREE VALUES IN THIS ISSUE (5c, 16c & 25c). THE VIGNETTE (THE DESIGN OF THE FIRST ADHESIVE STAMP OF THE COLONY) WAS ENGRAVED BY H. BARD. THE INDEX ENTRIES WERE:¹

CA ST. LUCIA BLANK CASEMENT STAMP DIE 22138 ROLLER DIE 20058
CA ST. LUCIA BLANK VIGNETTE STAMP DIE 22139 ROLLER DIE 20060
CA ST. LUCIA 5CTS CASEMENT STAMP DIE 22143 ROLLER DIE 20064
CA ST. LUCIA 16CTS CASEMENT STAMP DIE 22144 ROLLER DIE 20067
CA ST. LUCIA 25CTS CASEMENT STAMP DIE 22145 ROLLER DIE 20063

THE PROGRESSIVE DIE PROOF OF THE VIGNETTE (ONLY 2 EXIST)



¹ Die number 22138 was obviously the master for dies 22143-22145. The die for the vignette of each value was 22139.