

The New Home of The Royal Philatelic Society London

15 Abchurch Lane EC4N 7BW

These pictures show the building from outside and then the numerous rooms, a floor at a time.

The building comprises ground floor plus four storeys and lower ground and basement levels, i.e. it has a total of 7 levels.

It is currently used by The London Capital Club as a private members club. There is presently a restaurant in the lower ground (upper basement), run by the club but not restricted solely for members.

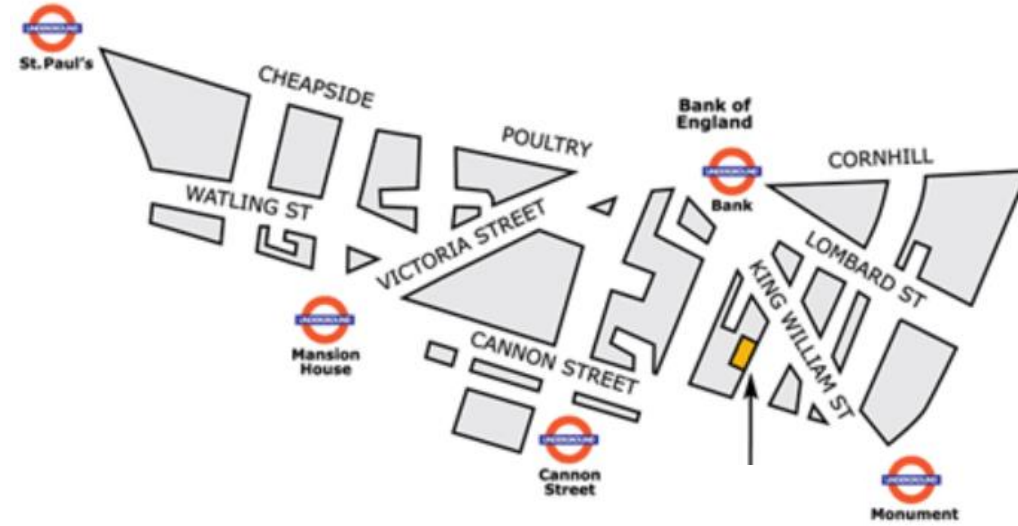
This document shows the building with plans as it is configured and used by the club, and the pictures are used by kind permission of The London Capital Club.

This information does **not** show how the building will look after the work to transform the building for use by The Royal Philatelic Society London.

The building location and exterior views

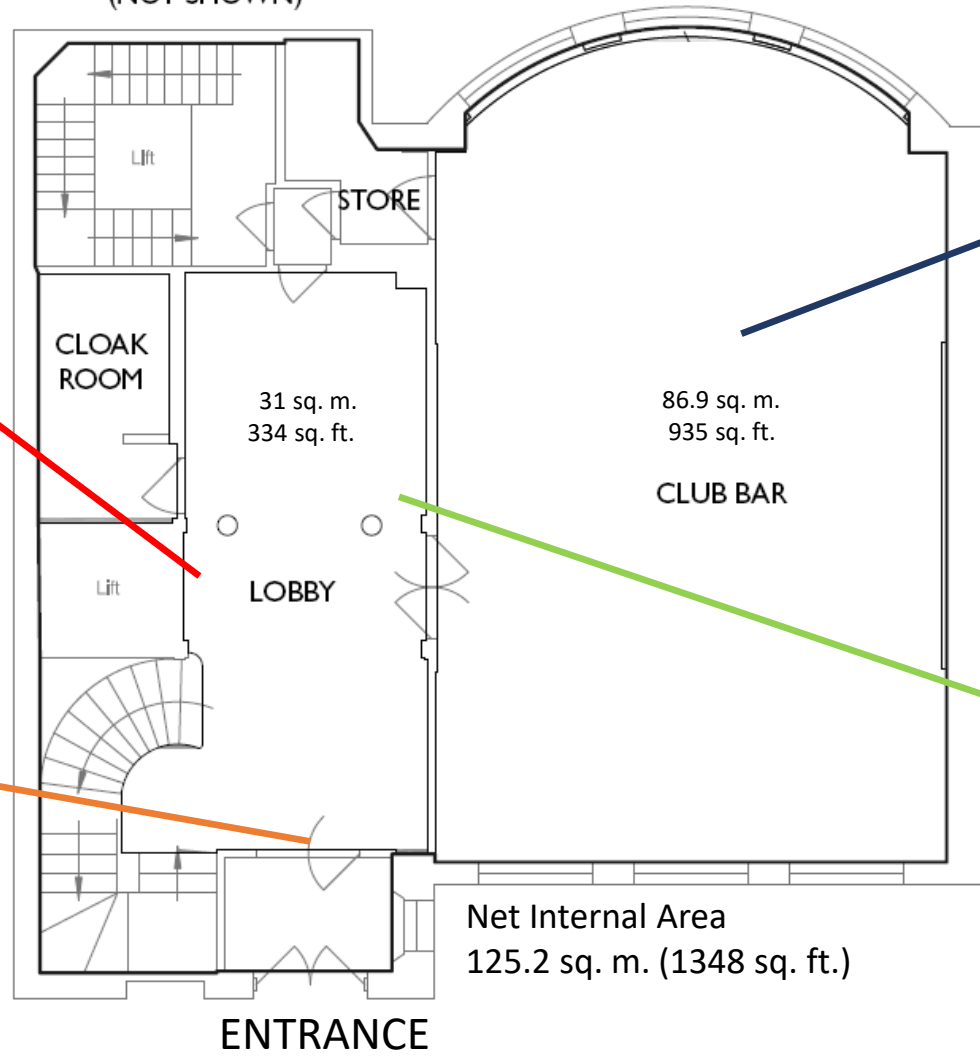


The building location and exterior views



GROUND FLOOR

St Mary Abchurch
PARISH ROOM
(NOT SHOWN)



Ground Floor: Lobby



Ground Floor: Club Bar

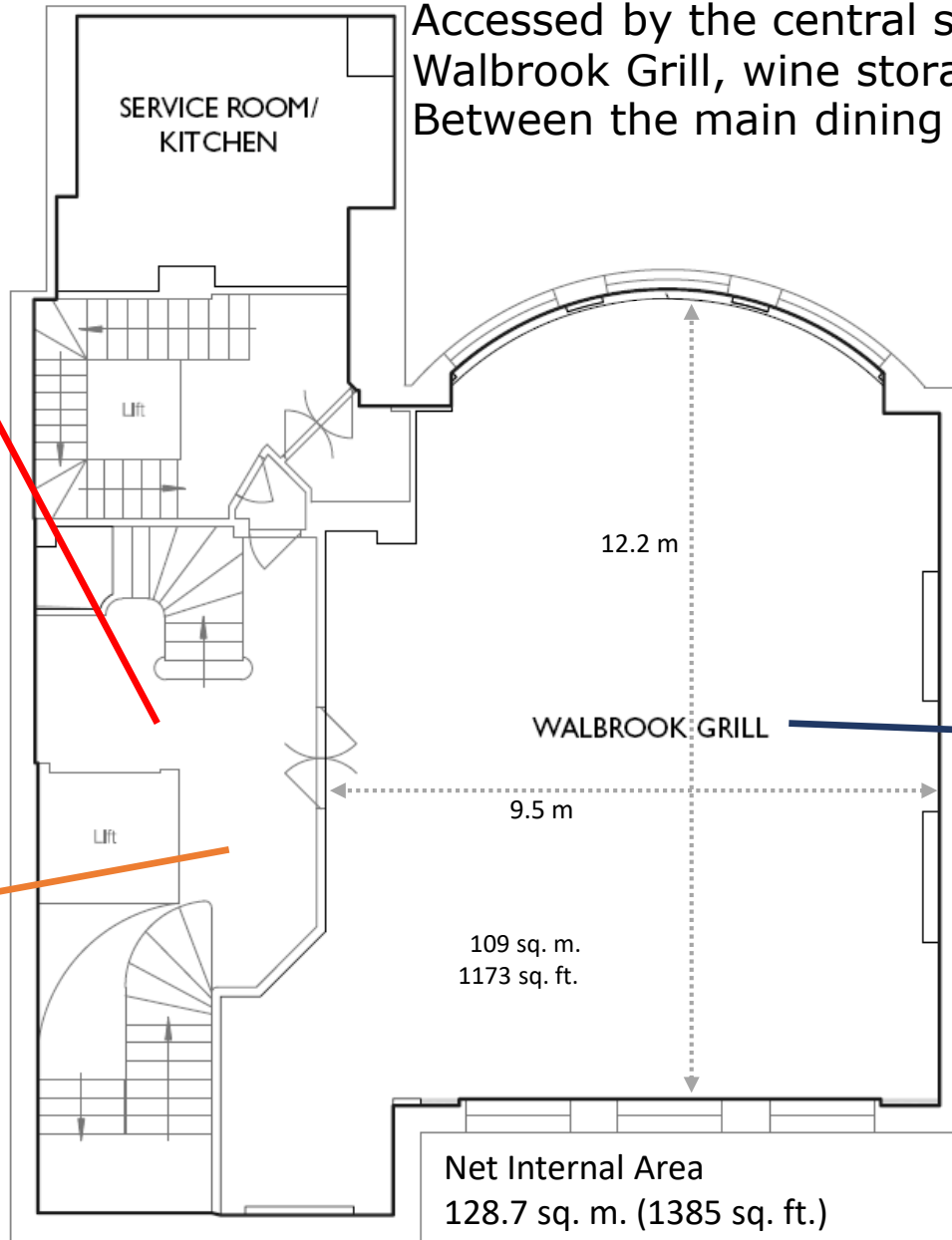


Ground Floor: Club Bar



FIRST FLOOR

Accessed by the central staircase or by the lift, it comprises the Walbrook Grill, wine storage room, and associated services spaces. Between the main dining room and the kitchen is a small anteroom.



The Central Staircase



The Central Staircase



First Floor: Walbrook Grill

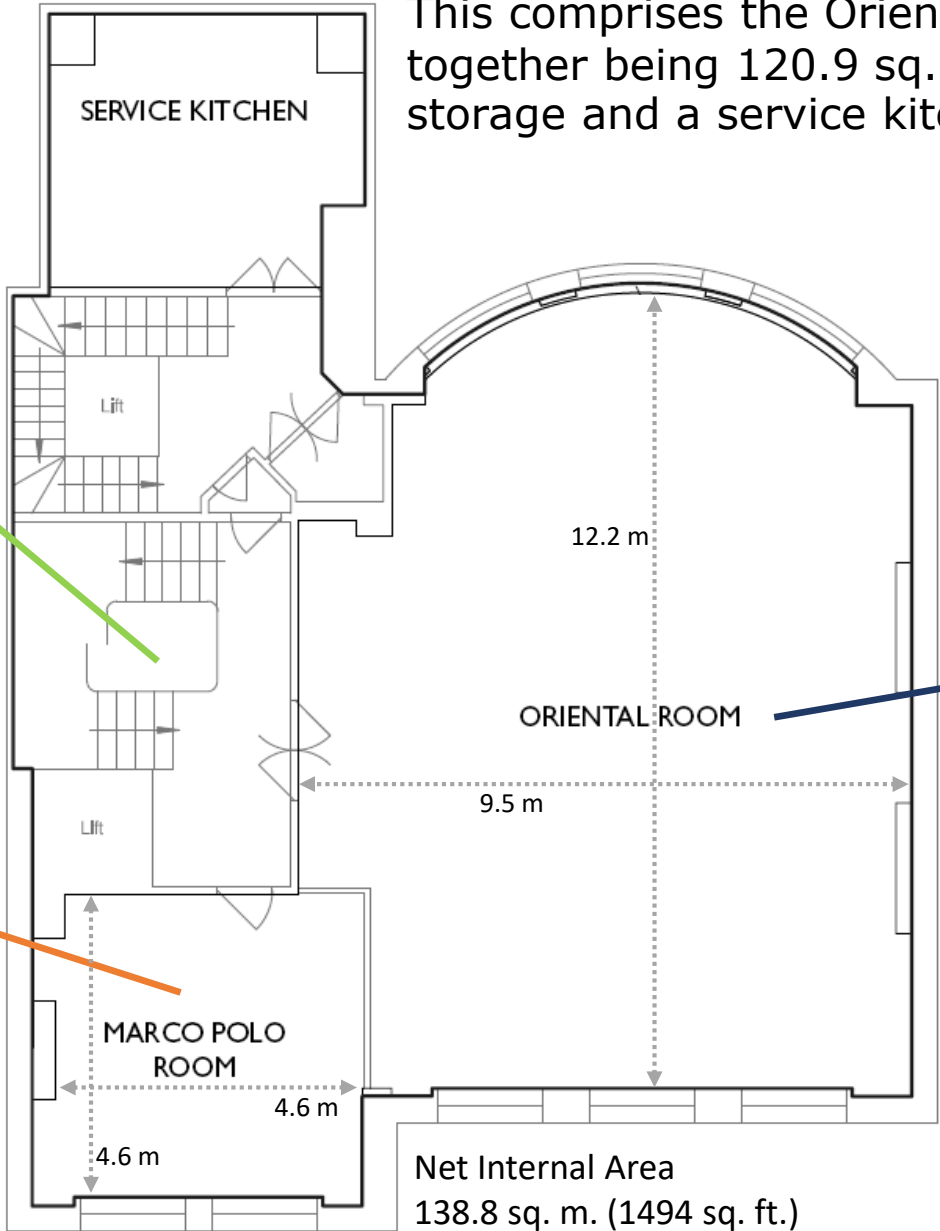


First Floor: Walbrook Grill



SECOND FLOOR

This comprises the Oriental Room, Marco Polo Room, together being 120.9 sq. m. (1301 sq. ft.), along with storage and a service kitchen.



Net Internal Area
138.8 sq. m. (1494 sq. ft.)

Second Floor: Oriental Room



Second Floor: Oriental Room



Second Floor: Oriental Room



Second Floor: Oriental Room

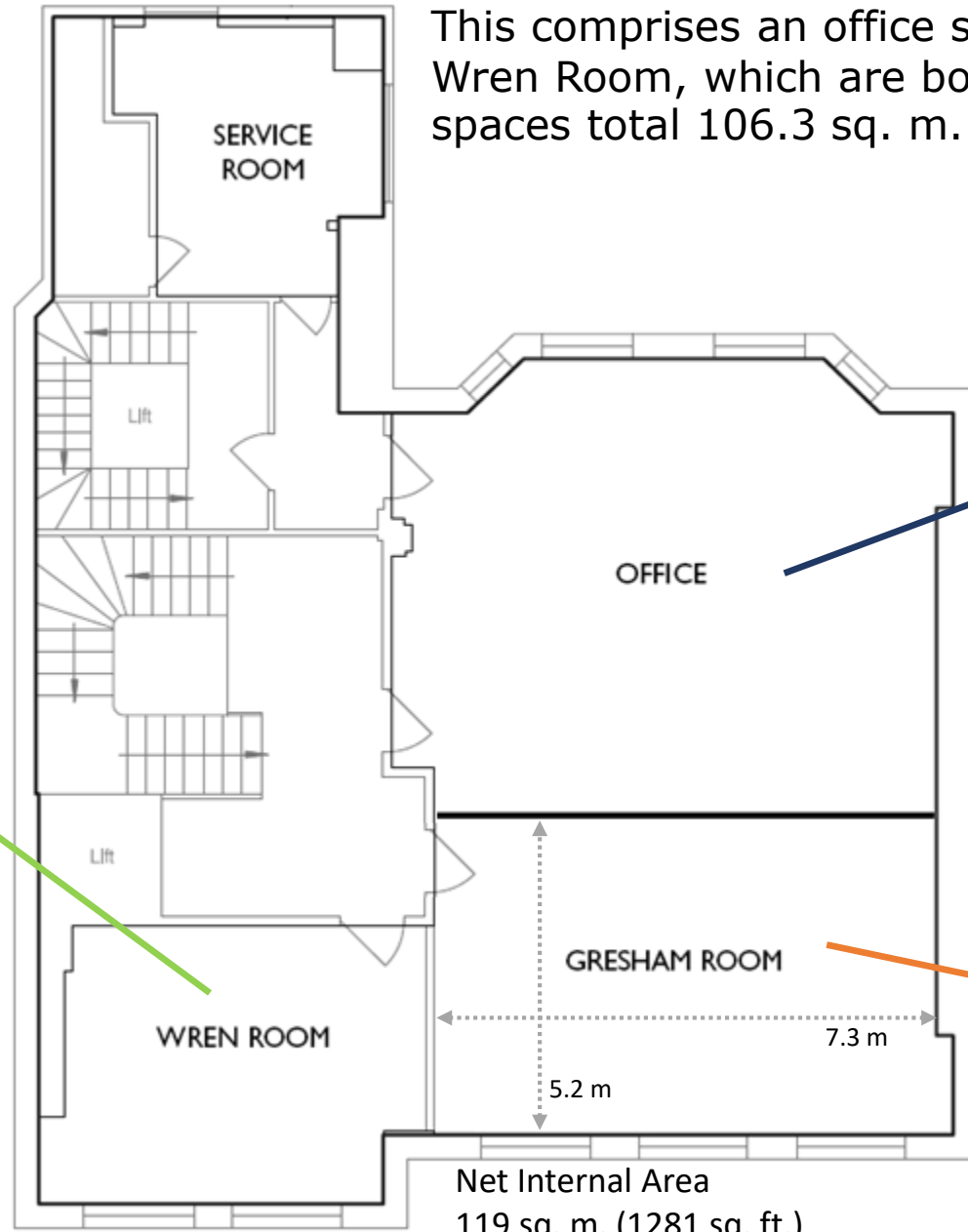


Second Floor: Marco Polo Room



THIRD FLOOR

This comprises an office space, and the Gresham Room and Wren Room, which are both meeting rooms. These three spaces total 106.3 sq. m. (1144 sq. ft.)



Net Internal Area
119 sq. m. (1281 sq. ft.)

Third Floor: Gresham Room

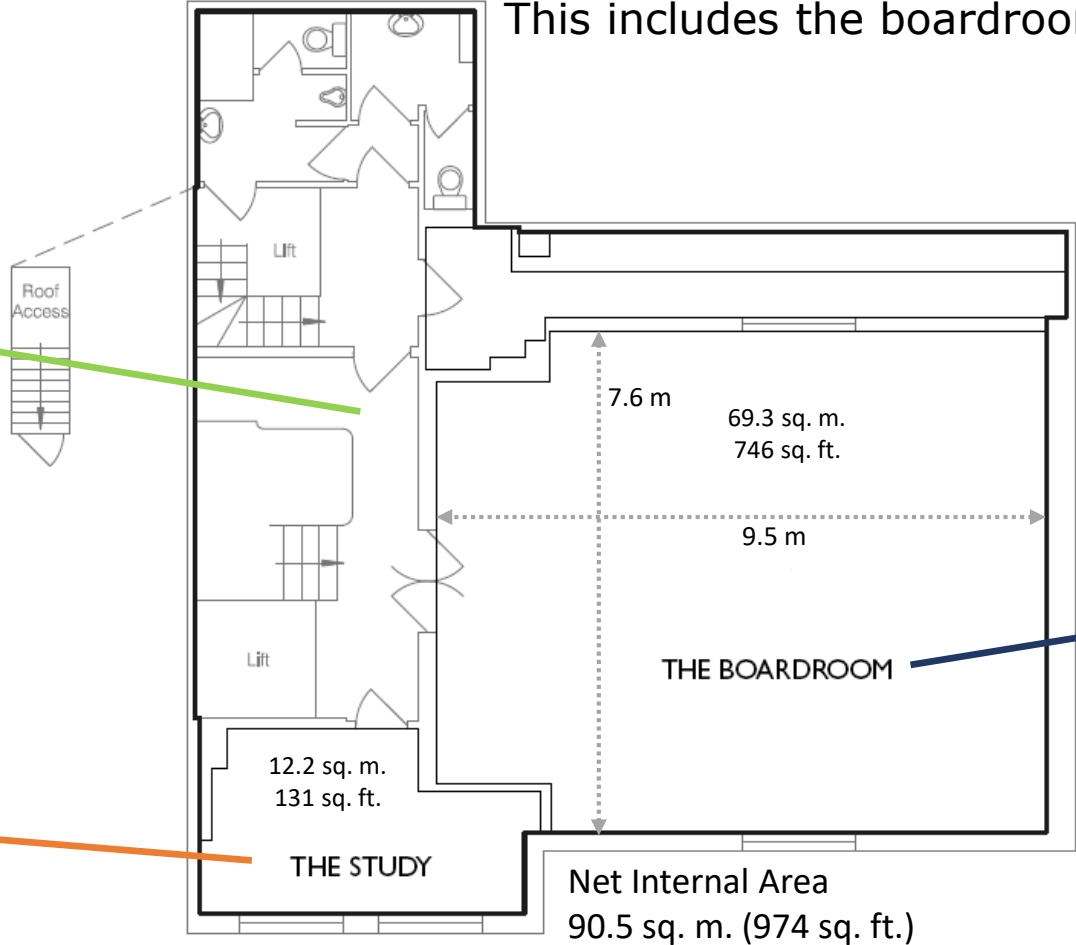


Third Floor: Wren Room



FOURTH FLOOR

This includes the boardroom and the study.



Fourth Floor: Boardroom

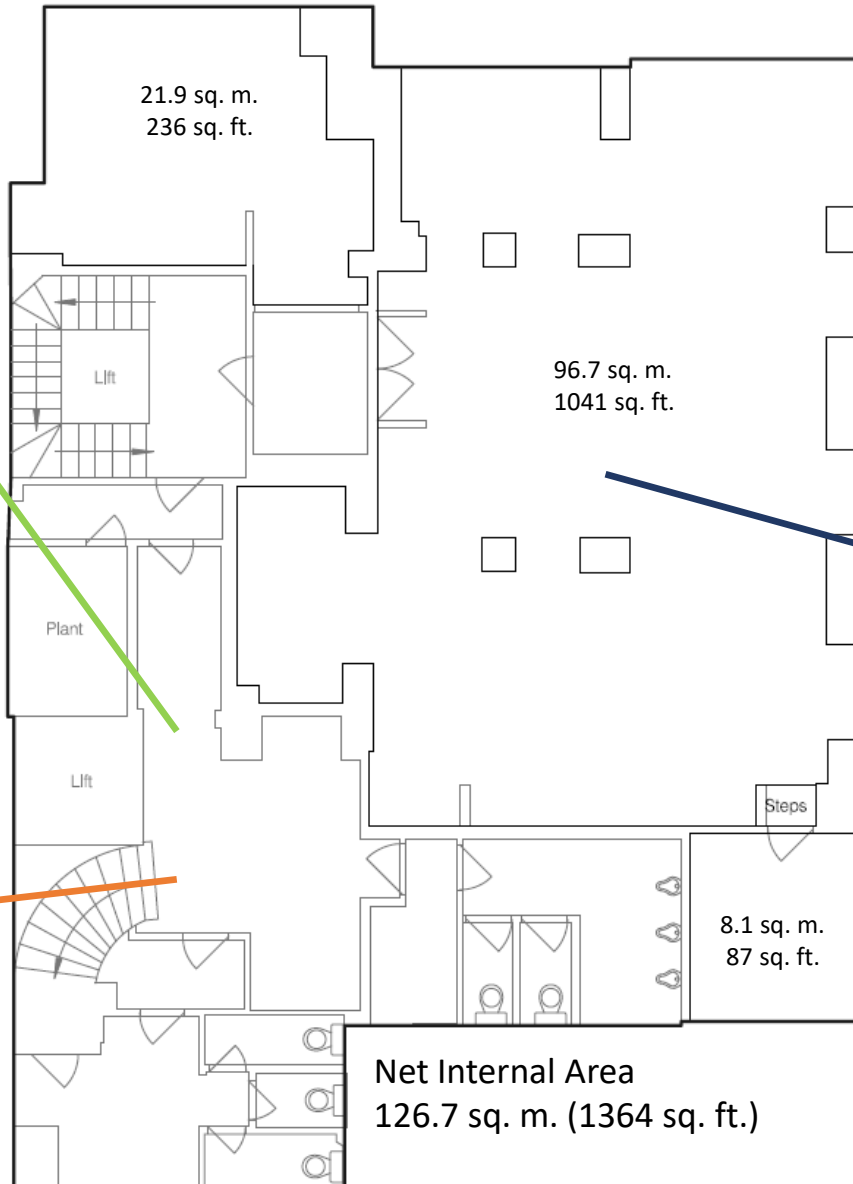


Fourth Floor: Study



UPPER BASEMENT

The building has two levels of basement. This upper basement is accessed from the ground floor entrance lobby and presently contains a bar and restaurant.

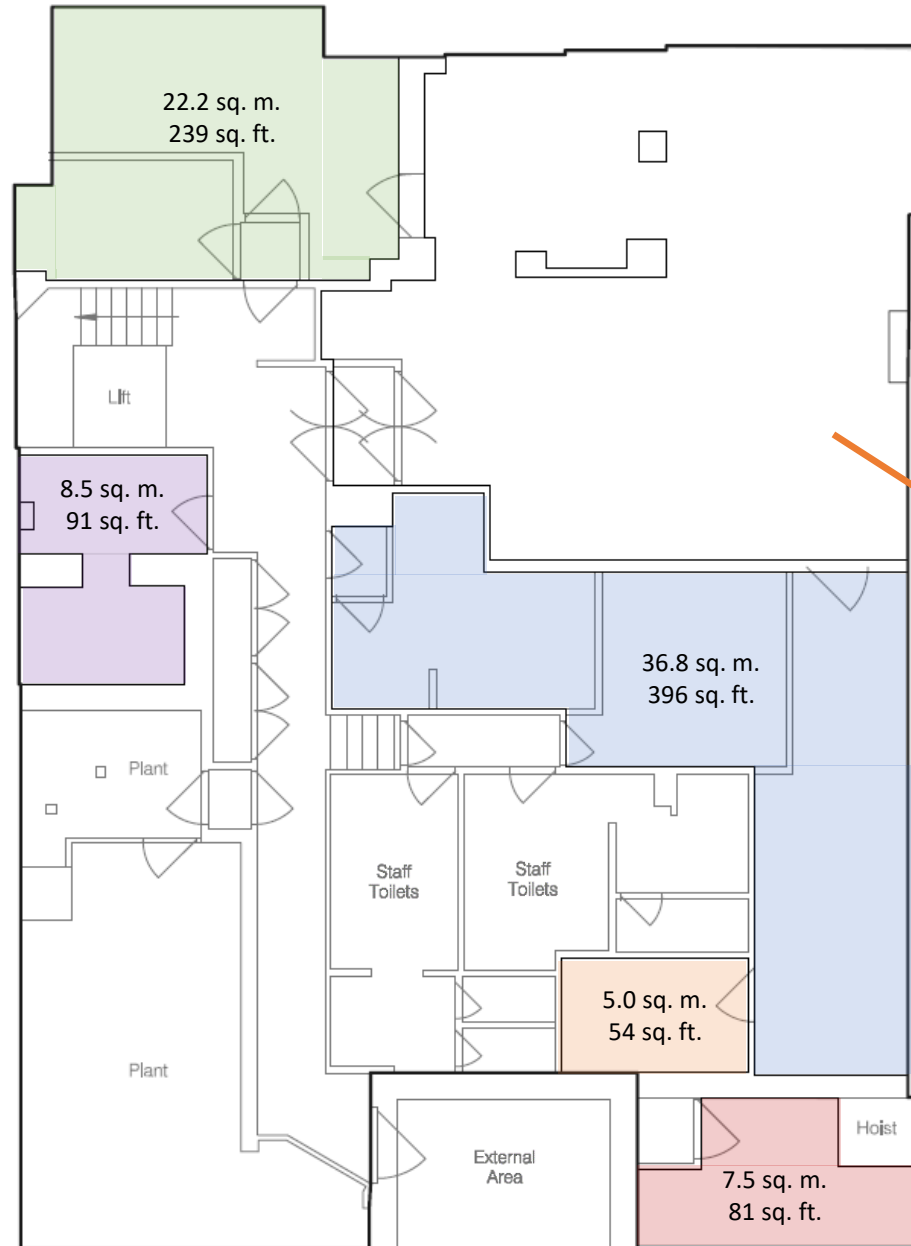


Net Internal Area
126.7 sq. m. (1364 sq. ft.)

Upper Basement



LOWER BASEMENT



The lower basement comprises kitchens, storerooms, staff rooms, plant and access to the lightwell onto Abchurch Lane. The lightwell includes staff entrance stairs and a goods lift.



The shaded parts of the plan have the floor area shown

Net Internal Area
140.9 sq. m. (1517 sq. ft.)